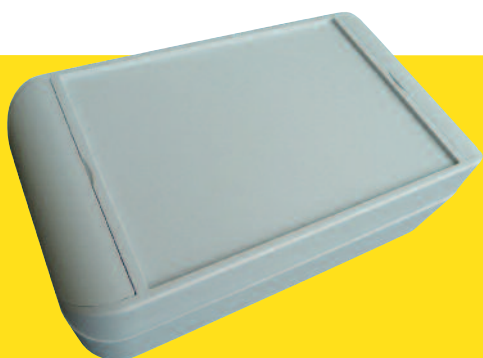




erco & gener

L'esprit modem >>



Entirely dedicated to goods security and tracking (containers, trailers), the GenTrack 35e allows to associate the GSM/GPRS and GPS functions in a single robust waterproof (IP 66) case.

Autonomous, the GenTrack 35e integrates GSM and GPS antennas as well as a long life battery, associated with an optimized management of the energy. The GPS data may be transmitted by SMS, data GSM or GPRS.

The GenTrack 35e is Quad-Band (850/900/1800/1900 MHz) GSM/GPRS Class 10. Its GPS solution with high sensitivity and quick acquisition, coupled with the A-GPS, ensures the data collection in difficult environmental conditions.

Its IP connectivity protocols (TCP, UDP, FTP, SMTP) integrated in the embedded application, (locally or remotely programmable) allow the rapid realization of high added value embedded telematic solutions.

## GenTrack 35e

- **GPS / A-GPS TRACKER**
- **GSM / GPRS COMMUNICATION**
- **WATERPROOF (IP 66)**
- **INTEGRATED ANTENNAS**
- **3 AXIS ACCELEROMETER**
- **13 AH BATTERY**
- **INTELLIGENT ENERGY MANAGEMENT**
- **3 YEARS WARRANTY**



## TECHNICAL CHARACTERISTICS

## GenTrack 35e

### GSM / GPRS FEATURES

- E-GSM Quad-bands 850/900/1800/1900 MHz
- ETSI GSM Phase 2+
- Class 4 (2W @ 850 / 900 MHz)
- Class 1 (1W @ 1800 / 1900 MHz)
- GPRS Class 10 (Up to 4Rx / 2Tx)
- Supports PBCCH, Coding schemes: CS1 to CS4
- Library (PPP, TCP, UDP, SMTP, FTP, SNMP)
- Asynchronous data circuit, transparent and non-transparent up to 14400 bits/s
- SMS point to point MT/MO and SMS CB (Cell Broadcast)

### GPS FEATURES

- 50 channel  $\mu$ blox receiver
- Precision:
  - 2,5 meters CEP
  - DGPS 2m CEP
  - Compatible A-GPS
  - Compatible GALILEO
- Acquisition time:
  - Hot start: 1 sec
  - Cold start with A-GPS: 15 sec
  - Cold start without A-GPS: 29 sec
- Re-acquisition time after loss of signal < 1 s
- High Sensitivity: -160 dBm when Tracking
- Protocols:
  - NMEA-0183 Input/output

### FUNCTIONS

- Energy and event management configurable
- 3-axis accelerometer ( $\pm 2g$  /  $\pm 8g$ ):
  - Movements
  - Chocks
  - Verticality
- Memory capacity: 20000 positions
- Zone management (Géofencing)
- AT Commands
- Watchdog

### INTERFACES

- 4 fixing holes (pitches 139 mm x 34 mm)
- Integrated GSM / GPS antennas
- Battery 3,6 Vdc – 13 AH
- Configuration via internal RS232 link (female 9-pin Sub-D)
- SIM reader (SIM 1,8 / 3V)

### AVERAGE AUTONOMY

- Up to 5 years  
(1 position reading and SMS / GPRS transmission per day)

### ENVIRONNEMENTAL & MECHANICAL

- Operating temperature: -20°C to +60°C
- Storage temperature: -40°C to +85°C
- Relative humidity: 90  $\pm$  10 %
- Waterproof case IP66  
Length 160 mm x Width 90 mm x Height 50 mm
- Weight: 370 g

### APPROVALS

- R&TTE (Radio & Telecom. Terminal Equipment)
- Warranty extension

### OPTIONS

- Configuration Kit (power supply + serial cable)
- Software Development Kit: cdrom SDK EGM
- Warranty extension



erco & gener

L'esprit Modem

ZI de S' Lambert-des-Levées - BP 30163 - F-49412 SAUMUR Cedex

Tél. : +33 (0)2 41 83 13 00 - Fax : +33 (0)2 41 67 19 20 - [www.ercogener.com](http://www.ercogener.com) - [infos@ercogener.com](mailto:infos@ercogener.com)

SA CAPITAL 183244 euros - R.C. SAUMUR B 332 174 820 - SIRET 332 174 820 00032 - NAF 2630Z - TVA Intra : FR 16 332 174 820