

Starter Kit for GenPro OEM SQB (3,6V)

Rev. 18/06/2008

Order code : 4408100012

This Starter Kit contains an electronic circuit board (ed.C) in order to make the integration of the **GenPro OEM SQB** modems easier.

It is delivered with accessories and 1 GenPro OEM SQB 3,6V version.

Board description

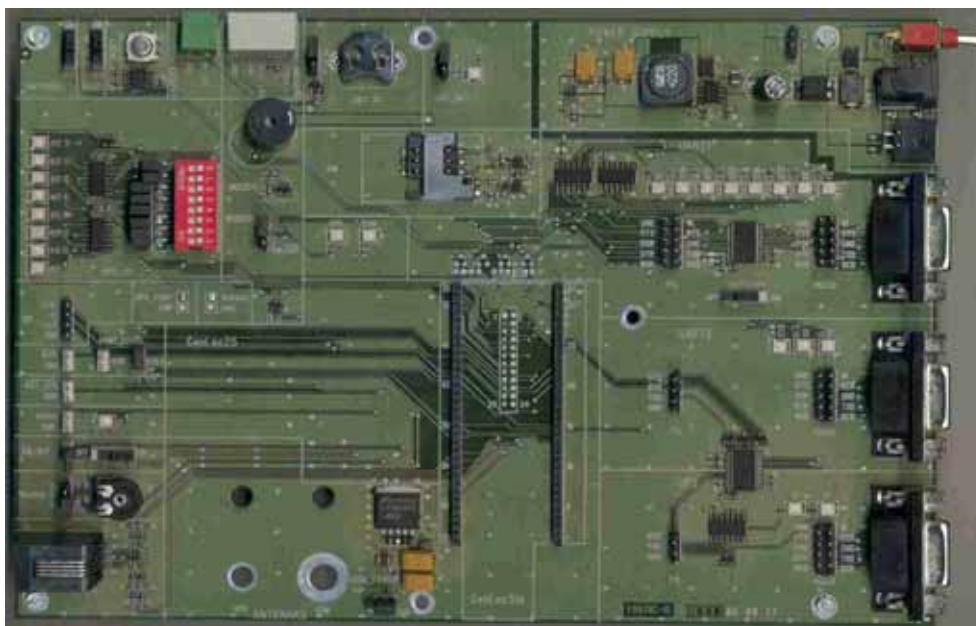
- External Power supply
- ON/OFF switch button for the module
- RESET push button for the module
- Audio connectors RJ9-type on MIC2/SPK2
- V24 interface on female SUBD9
- Socket Modem Form Factor Connector for GenPro OEM Location
- SIM reader, with SIM Presence
- GPIOs connectors, switches, LEDs

Dimensions

- 220 x 150 mm

Kit Contents

- 1 Socket Modem GenPro OEM (3,6V version)
- 1 External power supply – 230VAC/ 12VDC 15W
- 1 Magnetic antenna Quad-Band 850/900/1800/1900MHz 0dB / FME-F with SMA-M/FME-M adapter
- 1 SMA-F Cable (long. 67mm) for GSM antenna
- 1 RS232 serial cable Sub-D 9M / 9F
- 1 CD : technical information of integration



ERCO & GENER SA may at any time and without notice make changes and improvements to the products and services offered